

# SAIW WELDING AND FABRICATION INSPECTOR LEVEL 2



## COURSE INFORMATION

JOHANNESBURG, DURBAN, CAPE TOWN AND SECUNDA

### ENTRY REQUIREMENTS

SAIW Welding & Fabrication Level 1 qualification.

### COURSE OUTLINE

#### WEEK 1

- Construction and Design
- Materials Technology II

#### WEEK 2

- Destructive Testing
- Non-Destructive Testing

#### WEEK 3

- Heat Treatment
- Inspection and Quality Assurance

#### WEEK 4

- Procedure Qualification
- Fabrication Applications Engineering
- Legal Knowledge

#### WEEK 5

- Revision
- Examinations

[www.saiw.co.za](http://www.saiw.co.za)

*Please refer to contacts on page 28*

# SAIW WELDING AND FABRICATION INSPECTOR LEVEL 2

**- Incorporating IIW IWI Standard**

## COURSE DURATION

20 days + 3 days revision + 2 days exams

## PRICING (Including VAT)

Corporate Member **R 54,600**

Non-Corporate Member **R 59,000**

The SAIW welding inspector training programmes are tailored to meet industry requirements for welding inspection personnel involved in the fabrication, petrochemical, refinery, process plant, power generation, construction and other industries.

The SAIW Welding and Fabrication Inspector Level 2 training programme is essential to complete the training and education requirements for most welding inspectors. It provides added knowledge of materials technology and the impact of welding on materials. Heat treatment requirements of the major codes of construction are covered as are destructive testing and non-destructive testing of welded joints. The course is essential for inspectors working in the fabrication, petrochemical, refinery, process plant, power generation, construction and other industries.

Inspectors with this qualification are prepared for approval for code compliance of welding procedures. With suitable experience the Inspector will also be prepared to take on inspection management responsibilities.

**STUDENTS HAVING SUCCESSFULLY COMPLETED THE SAIW WELDING AND FABRICATION INSPECTOR LEVEL 2 INSPECTOR COURSE MAY QUALIFY FOR THE INTERNATIONALLY RECOGNISED IIW IWI STANDARD LEVEL DIPLOMA, SUBJECT TO THE REQUIREMENTS:**

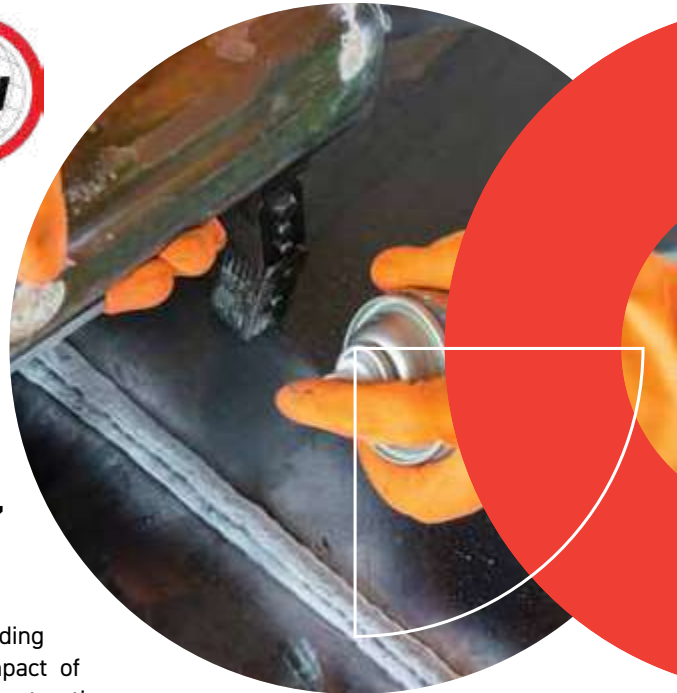
**1** Both SAIW Level 1 and Level 2.

**2** At least twenty years of age.

**3** Have at least two years of relevant practical experience.

**4** Students who qualified as SAIW Welding and Fabrication Inspector Level 2 before 2010 have to complete an extra 2 day module and exam in construction and design. (Details on application).

**5** SAIW Welding and Fabrication Level 1 + Level 2 + Oral + 2 Years = IWIP-S



# SAIW WELDING AND FABRICATION INSPECTOR LEVEL 2

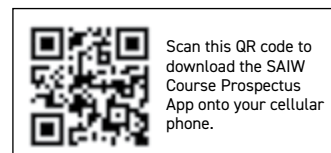
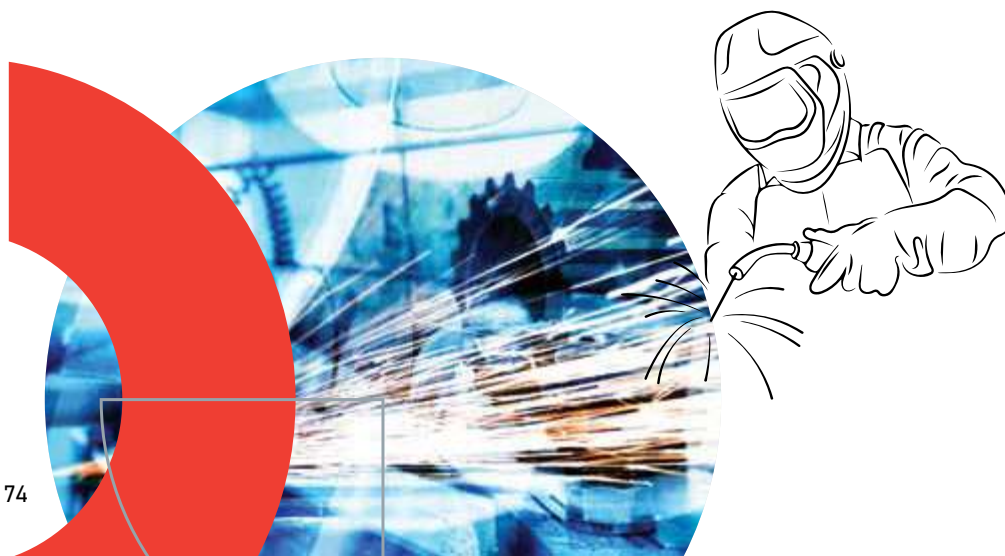


**- Incorporating IIW IWI Standard (IWI-S)**

**COURSE SCHEDULE | SAIW Welding and Fabrication Inspector Level 2**

**JOHANNESBURG, SECUNDA, DURBAN, CAPE TOWN**

WEEK	COURSE INFORMATION	HRS	JHB 01	JHB 02	SEC 01	DBN 01	CPT 01
1	Construction and Design	40	12 - 16 Feb	29 Jul - 02 Aug	20 - 24 May	19 - 23 Feb	27 - 31 May
	Materials Technology II						
2	Destructive Testing	40	11 - 15 Mar	19 - 23 Aug	10 - 14 Jun	26 Feb - 01 Mar	03 - 07 Jun
	Non-Destructive Testing						
3	Heat Treatment	40	08 - 12 Apr	09 - 13 Sep	08 - 12 Jul	08 - 12 Apr	24 - 28 Jun
	Inspection and Quality Assurance						
4	Procedure Qualification	40	06 - 10 May	07 - 11 Oct	29 Jul - 02 Aug	15 - 19 Apr	01 - 05 Jul
	Fabrication Applications Engineering						
	Legal Knowledge						
5	Revision	24	03 - 05 Jun	28 - 30 Oct	12 - 14 Aug	13 - 15 May	22 - 24 Jul
	Examination - Open Book	3	06 Jun	31 Oct	15 Aug	16 May	25 Jul
	Examination - Closed Book	3					
	Examination - Practical	5	07 Jun	01 Nov	16 Aug	17 May	26 Jul



Scan this QR code to download the SAIW Course Prospectus App onto your cellular phone.